



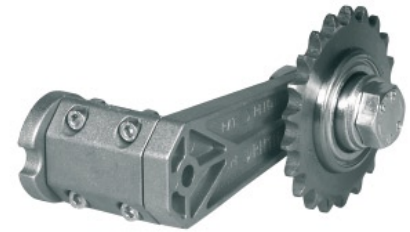
JWIS[®] Automatic tensioners

Automatic chain tensioners compensate the chain elongation in the machines and conveyor systems and that way further the run time of the applied chain. iwis chain tensioners are made from high quality materials. Depending on the application various types are available.



Iwis® RHR Type

with sprocket and bearing



| | chain pitch | Newton | A ± 1 | B | C | D | E | F | G | H ± 1 | L | Q | R | S | T | U | V | N° |
|-----------------|--------------|--------|-------|------|------|----|-----|-----|------|-------|----|----|----|-----|------|------|------|----|
| Type RHR | | | | | | | | | | | | | | | | | | |
| RHR 111 | 3/8" x 7/32" | 0÷100 | 58 | 6 | 8 | 35 | 80 | M6 | 8,5 | 51 | 8 | 22 | 5 | 9,2 | 19,7 | 9,7 | 16,7 | 21 |
| RHR 155 | 3/8" x 7/32" | 0÷150 | 71 | 8 | 8,5 | 45 | 100 | M8 | 10,5 | 64 | 8 | 30 | 6 | 9,2 | 19,7 | 9,7 | 16,7 | 21 |
| RHR 155 | 1/2" x 5/16" | 0÷150 | 71 | 8 | 8,5 | 45 | 100 | M8 | 10,5 | 64 | 8 | 30 | 6 | 9,2 | 19,7 | 12,5 | 19,5 | 16 |
| RHR 188 | 1/2" x 5/16" | 0÷300 | 84 | 10,5 | 8,5 | 58 | 100 | M10 | 13 | 78 | 10 | 37 | 8 | 9,2 | 19,7 | 12,5 | 19,5 | 16 |
| RHR 188 | 5/8" x 3/8" | 0÷300 | 85 | 10,5 | 8,5 | 58 | 100 | M10 | 13 | 78 | 10 | 37 | 8 | 9,2 | 19,7 | 15,3 | 23,3 | 17 |
| RHR 277 | 3/4" x 7/16" | 0÷900 | 114 | 15 | 10,5 | 78 | 130 | M12 | 17 | 107 | 12 | 53 | 10 | 9,2 | 19,7 | 17,7 | 25,7 | 15 |
| RHR 277 | 1" x 17 mm | 0÷900 | 114 | 15 | 10,5 | 78 | 130 | M12 | 17 | 107 | 12 | 53 | 10 | 8,9 | 19,4 | 26,4 | 34,4 | 12 |

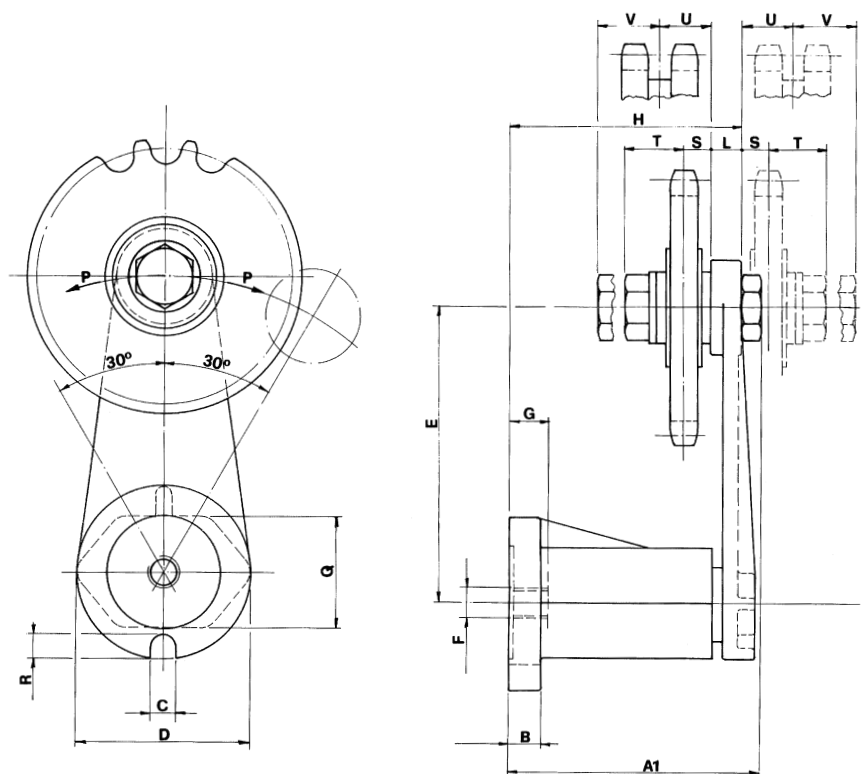
TYPE RHR

- Good damping effect, reducing noise and vibration
- Operating angle > 30° in both directions of rotation
- Simple screw mounting, internally or externally
- Operational temperature > 65°C
- Applies to reverse direction drives
- Interchangeable to similar systems

EXAMPLE OF ORDER

Tensioner for 1/2" pitch single chain RHR 155 1/2" S. For single chain available from stock. For double chain on request

S = single chain **D** = double chain



iwis® RHP Type

with low friction coefficient polythene head

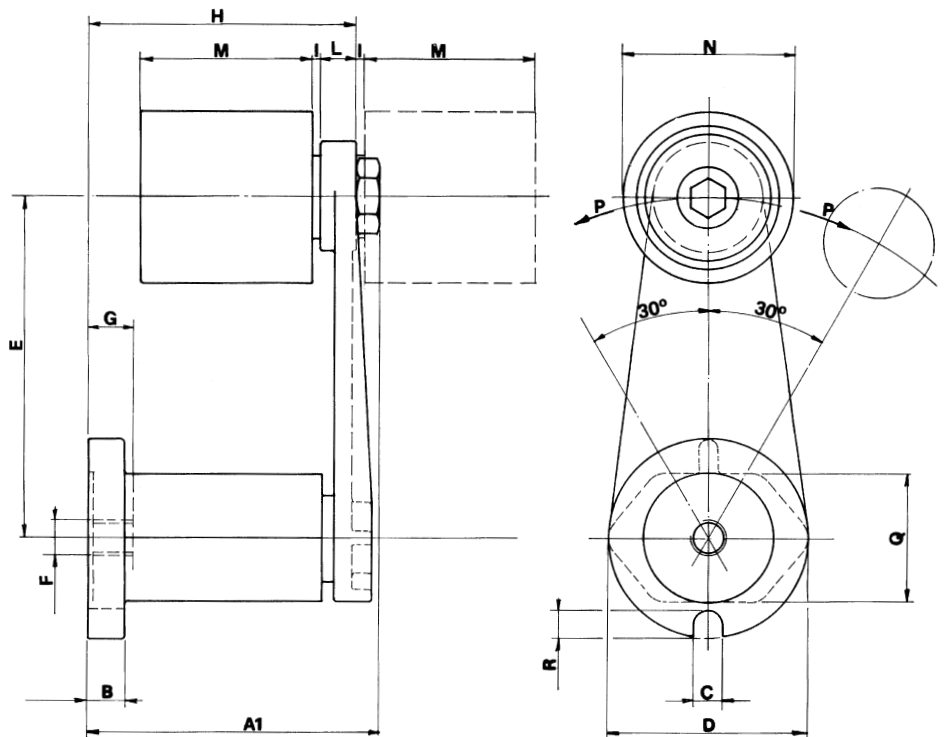


| | chain pitch | Newton | A±1 | B | C | D | E | F | G | H±1 | L | M | N | O | R | S | T | U | V | Z |
|-----------------|--------------|--------|-----|------|------|----|-----|-----|------|-----|----|----|---|----|----|---|-----|----|------|-----|
| Type RHP | | | | | | | | | | | | | | | | | | | | |
| RHP 111 | 3/8" x 7/32" | 0÷100 | 57 | 6 | 8 | 35 | 80 | M6 | 8,5 | 51 | 8 | 20 | 7 | 22 | 5 | 4 | 70 | 20 | 25 | 102 |
| RHP 155 | 3/8" x 7/32" | 0÷150 | 70 | 8 | 8,5 | 45 | 100 | M8 | 10,5 | 64 | 8 | 20 | 7 | 30 | 6 | 4 | 70 | 20 | 25 | 122 |
| RHP 155 | 1/2" x 5/16" | 0÷150 | 70 | 8 | 8,5 | 45 | 100 | M8 | 10,5 | 64 | 8 | 20 | 7 | 30 | 6 | 4 | 70 | 20 | 35 | 122 |
| RHP 188 | 1/2" x 5/16" | 0÷300 | 84 | 10,5 | 8,5 | 58 | 100 | M10 | 13 | 78 | 10 | 20 | 7 | 37 | 8 | 4 | 70 | 20 | 35 | 122 |
| RHP 188 | 5/8" x 3/8" | 0÷300 | 85 | 10,5 | 8,5 | 58 | 100 | M10 | 13 | 78 | 10 | 22 | 8 | 37 | 8 | 5 | 90 | 25 | 41,5 | 129 |
| RHP 277 | 3/4" x 7/16" | 0÷900 | 114 | 15 | 10,5 | 78 | 130 | M12 | 17 | 107 | 12 | 22 | 8 | 53 | 10 | 5 | 90 | 30 | 49 | 159 |
| RHP 277 | 1" x 17 mm | 0÷900 | 114 | 15 | 10,5 | 78 | 130 | M12 | 17 | 107 | 12 | 25 | 8 | 53 | 10 | 5 | 110 | 45 | 78 | 165 |

EXAMPLE OF ORDER

Tensioner for 1/2" pitch single chain
RHP 155 1/2" S. For single chain available
from stock. For double chain on request.

S = single chain **D** = double chain



Iwis® TCR Type

with spocket and bearing



| Type TCR | Newton | | chain pitch | N° | A | B | C | CH | D | E | F | G | H | I | L | M | N | O | P | β |
|----------------|--------|------|---------------|----|---|------|------|----|----|----|----|----|------|------|-----|-----|------|------|------|-----|
| | min. | max. | | | | | | | | | | | | | | | | | | |
| *TCR-05 – 3/8" | 80 | 160 | 3/8" x 7/32" | 21 | 5 | 15 | 15 | 24 | 63 | 35 | 23 | 23 | 75,5 | 9,2 | 119 | M10 | 19,7 | - | - | 45° |
| TCR-1 – 3/8" | 100 | 210 | 3/8" x 7/32" | 21 | 5 | 15,5 | 15,5 | 24 | 69 | 36 | 30 | 25 | 86,5 | 9,2 | 134 | M10 | 19,7 | 18 | 11 | 45° |
| TCR-1 – 1/2" | 100 | 210 | 1/2" x 5/16" | 16 | 5 | 15,5 | 15,5 | 24 | 69 | 36 | 30 | 25 | 86,5 | 9,2 | 134 | M10 | 19,7 | 16,5 | 12,5 | 45° |
| TCR-1 – 5/8" | 120 | 240 | 5/8" x 3/8" | 17 | 5 | 15,5 | 15,5 | 24 | 69 | 36 | 30 | 25 | 86,5 | 9,2 | 134 | M10 | 19,7 | 21,8 | 15,3 | 45° |
| TCR-2 – 5/8" | 200 | 350 | 5/8" x 3/8" | 17 | 7 | 18 | 18 | 27 | 90 | 43 | 34 | 30 | 100 | 9,2 | 159 | M12 | 19,7 | 21,8 | 15,3 | 30° |
| TCR-2 – 3/4" | 200 | 350 | 3/4" x 7/16" | 15 | 7 | 18 | 18 | 27 | 90 | 43 | 34 | 30 | 100 | 9,2 | 159 | M12 | 19,7 | 19,4 | 17,7 | 30° |
| TCR-2 – 1" | 240 | 380 | 1" x 17 mm | 12 | 7 | 18 | 18 | 27 | 90 | 43 | 34 | 30 | 100 | 8,9 | 159 | M12 | 19,4 | 23,9 | 26,4 | 30° |
| TCR-2 – 1 1/4" | 240 | 380 | 1 1/4" x 3/4" | 9 | 7 | 18 | 18 | 27 | 90 | 43 | 34 | 30 | 100 | 11,5 | 159 | M12 | 19,4 | - | - | 30° |
| TCR-2 – 1 1/2" | 240 | 380 | 1 1/2" x 1" | 9 | 7 | 18 | 18 | 27 | 90 | 43 | 34 | 30 | 100 | 14 | 159 | M12 | 19,4 | - | - | 30° |

* Plastic version

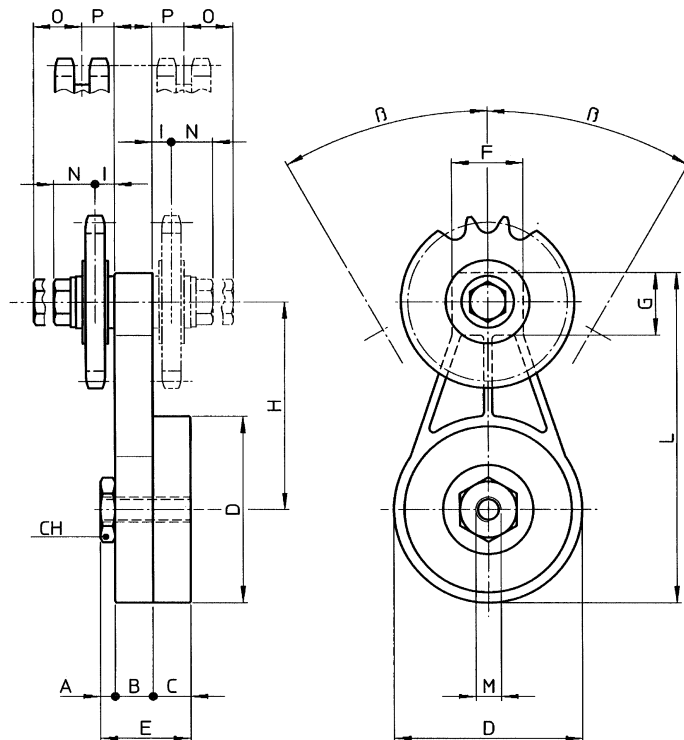
TYPE TC

- Linear force progression
- Operating angle > 45° in both directions of rotation
- Simple screw mounting, internally or externally
- Operational temperature to 100°C
- Applies to reverse direction drives
- Resistant against oil and solvents
- better fastening due to 2 (TCR-1) resp. 3 (TCR-2) grooves

EXAMPLE OF ORDER

Tensioner for 1/2" pitch single chain TCP 1 1/2" S. For single chain available from stock. For double chain on request.

S = single chain **D** = double chain



iwis® TCP Type

with low friction coefficient polythene head



| Typ TCP | Newton | | chain pitch | A | B | C | CH | D | E | F | G | H | I | L | M | N | O | P | Q | β |
|---------------|--------|------|--------------|---|------|------|----|----|----|----|----|------|-----|-----|-----|-----|----|----|----|-----|
| | min. | max. | | | | | | | | | | | | | | | | | | |
| TCP-05 – 3/8" | 80 | 160 | 3/8" x 7/32" | 5 | 15 | 15 | 24 | 63 | 35 | 23 | 23 | 75,5 | 5,5 | 119 | M10 | 70 | 20 | | 22 | 45° |
| TCP-1 – 3/8" | 100 | 210 | 3/8" x 7/32" | 5 | 15,5 | 15,5 | 24 | 69 | 36 | 30 | 25 | 86,5 | 7 | 134 | M10 | 70 | 20 | 20 | 22 | 45° |
| TCP-1 – 1/2" | 100 | 210 | 1/2" x 5/16" | 5 | 15,5 | 15,5 | 24 | 69 | 36 | 30 | 25 | 86,5 | 7 | 134 | M10 | 70 | 20 | 20 | 22 | 45° |
| TCP-1 – 5/8" | 120 | 240 | 5/8" x 3/8" | 5 | 15,5 | 15,5 | 24 | 69 | 36 | 30 | 25 | 86,5 | 7 | 134 | M10 | 90 | 22 | 25 | 29 | 45° |
| TCP-2 – 5/8" | 200 | 350 | 5/8" x 3/8" | 7 | 18 | 18 | 27 | 90 | 43 | 34 | 30 | 100 | 8 | 159 | M12 | 90 | 22 | 25 | 29 | 30° |
| TCP-2 – 3/4" | 200 | 350 | 3/4" x 7/16" | 7 | 18 | 18 | 27 | 90 | 43 | 34 | 30 | 100 | 8 | 159 | M12 | 90 | 22 | 30 | 29 | 30° |
| TCP-2 – 1" | 240 | 380 | 1" x 17 mm | 7 | 18 | 18 | 27 | 90 | 43 | 34 | 30 | 100 | 8 | 159 | M12 | 110 | 25 | 45 | 35 | 30° |

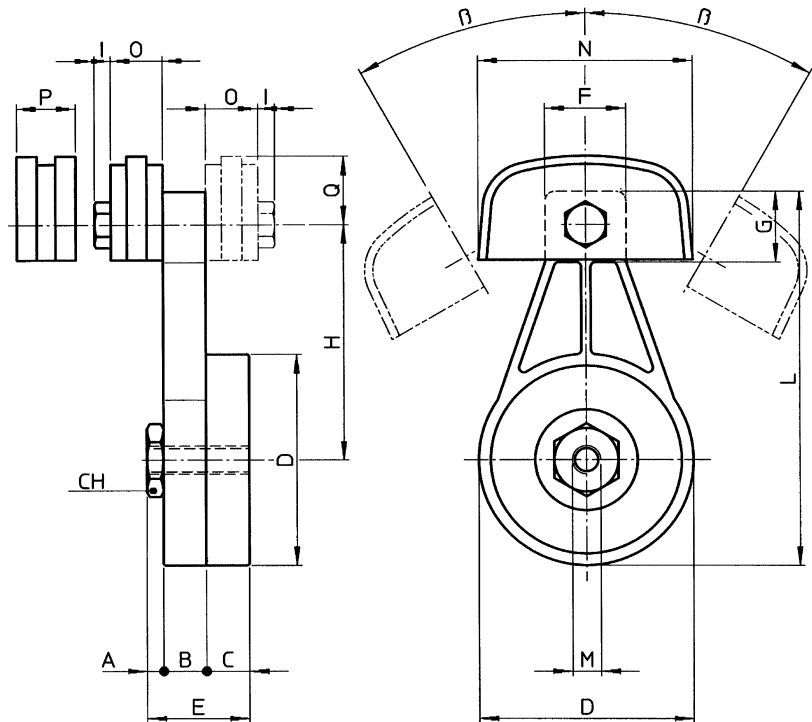
EXAMPLE OF ORDER

Tensioner for 1/2" pitch single chain
TCP 1 – 1/2" S. For single chain available
from stock. For double chain on request.

S = single chain **D** = double chain

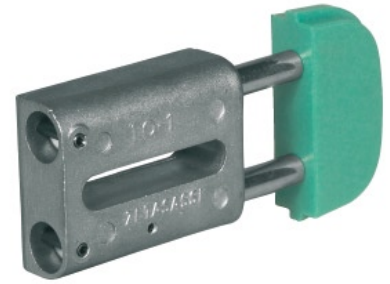
NOTE

assembly instruction tensioner TC type
→ **Page 97**



Iwis® TO Series

Automatic chain tensioners



| Type TO | Newton | | chain pitch | A1 | A2 | A3 | B | C | D | E | F | G | H | I | L | M | N | O | P | R |
|------------------|--------|------|---------------|----|----|------|----|------|------|------|----|----|-----|-----|-----|----|----|-----|-----|-----|
| | min. | max. | | | | | | | | | | | | | | | | | | |
| TO-1 – 3/8" | 130 | 250 | 3/8" x 7/32" | 20 | 20 | 25 | 23 | 12,5 | 11 | 56,2 | 7 | 58 | 74 | 110 | 138 | - | - | - | 70 | 100 |
| TO-1 – 1/2" | 130 | 250 | 1/2" x 5/16" | 20 | 20 | 25 | 23 | 12,5 | 11 | 56,2 | 7 | 58 | 74 | 110 | 138 | - | - | - | 70 | 100 |
| TO-1 – 5/8" | 130 | 250 | 5/8" x 3/8" | 20 | 25 | 41,5 | 23 | 12,5 | 11 | 56,2 | 7 | 58 | 74 | 110 | 138 | - | - | - | 70 | 100 |
| TO-2 – 5/8" | 180 | 420 | 5/8" x 3/8" | 22 | 25 | 41,5 | 28 | 15 | 12,5 | 70,5 | 9 | 70 | 87 | 133 | 169 | - | - | - | 90 | 120 |
| TO-2 – 3/4" | 180 | 420 | 3/4" x 7/16" | 22 | 30 | 49 | 28 | 15 | 12,5 | 70,5 | 9 | 70 | 87 | 133 | 169 | - | - | - | 90 | 120 |
| TO-3 – 1" | 300 | 650 | 1" x 17 mm | 25 | 45 | 78 | 33 | 17,5 | 14,5 | 82 | 9 | 86 | 104 | 160 | 202 | 21 | 35 | 70 | 110 | 140 |
| TO-3 – 1 1/4" | 300 | 650 | 1 1/4" x 3/4" | 25 | 54 | 90 | 33 | 17,5 | 14,5 | 82 | 9 | 86 | 104 | 160 | 202 | 21 | 35 | 70 | 110 | 140 |
| TO-3 – 1 1/2" | 300 | 650 | 1 1/2" x 1" | 25 | 71 | 119 | 33 | 17,5 | 14,5 | 82 | 9 | 86 | 104 | 160 | 202 | 21 | 35 | 70 | 110 | 140 |
| TO-05 – 3/8" | 95 | 190 | 3/8" x 7/32" | 20 | - | - | 25 | 12,5 | 9 | 60 | 10 | 53 | 75 | 120 | 149 | 22 | 48 | 1,5 | 70 | 100 |
| TO-05-DP1 – 3/8" | 95 | 190 | 3/8" x 7/32" | 20 | 20 | - | 25 | 12,5 | 9 | 60 | 10 | 53 | 75 | 111 | 139 | 22 | 48 | 1,5 | 70 | 100 |
| TO-05-DP1 – 1/2" | 95 | 190 | 1/2" x 5/16" | 20 | 20 | - | 25 | 12,5 | 9 | 60 | 10 | 53 | 75 | 111 | 139 | 22 | 48 | 1,5 | 70 | 100 |
| TO-05-DP1 – 5/8" | 95 | 190 | 5/8" x 3/8" | 20 | 25 | - | 25 | 12,5 | 9 | 60 | 10 | 53 | 75 | 111 | 139 | 22 | 48 | 1,5 | 70 | 100 |

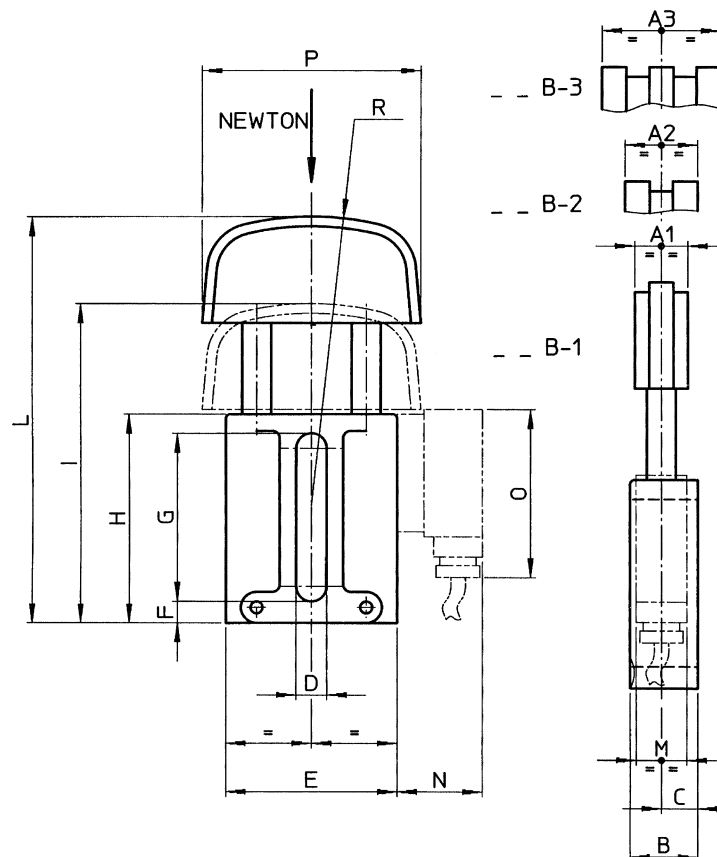
AUTOMATIC CHAIN TENSIONERS

The automatic tensioners take up the chain slackening and keep the tension constant, without any operator attending the adjustment. The TO-AT-ET tighteners are designed to last and are made of top quality materials. The maximum operating temperature is 65°C (100°C for the ET model only).

Available on request:

1. Studs and spring in stainless steel AISI 304 for the Food industry
2. Special head shapes
3. Version TO-05 and TO-05 DP1 with basic body in plastic execution (DELRIN).
Slight type with lower tensioning force – available on request.

* Plastic version



iwis® TA Series



| Type TA | Newton | | chain pitch | A1 | A2 | A3 | B | C | D | E | F | G | H | I | L | M | N | O | P | R | |
|---------------|--------|------|----------------|------|----|------|----|------|------|------|---|----|-----|-----|-----|----|----|----|-----|-----|-----|
| | min. | max. | | | | | | | | | | | | | | | | | | | |
| TA-1 – 3/8" | 130 | 250 | 3/8" x 7/32" | 20 | 20 | 25 | 23 | 12,5 | 11 | 56,2 | 7 | 58 | 74 | 115 | 143 | | | | | 140 | 120 |
| TA-1 – 1/2" | 130 | 250 | 1/2" x 5/16" | 20 | 20 | 35 | 23 | 12,5 | 11 | 56,2 | 7 | 58 | 74 | 115 | 143 | | | | | 140 | 120 |
| TA-2 – 5/8" | 180 | 420 | 5/8" x 3/8" | 22 | 25 | 41,5 | 28 | 15 | 12,5 | 70,5 | 9 | 70 | 87 | 128 | 164 | | | | | 140 | 140 |
| TA-2 – 3/4" | 180 | 420 | 3/4" x 7/16" | 22 | 30 | 49 | 28 | 15 | 12,5 | 70,5 | 9 | 70 | 87 | 128 | 164 | | | | | 140 | 140 |
| TA-3 – 1" | 300 | 650 | 1" x 17 mm | 25 | 45 | 78 | 33 | 17,5 | 14,5 | 82 | 9 | 86 | 104 | 145 | 187 | 21 | 35 | 70 | 140 | 160 | |
| TA-3 – 1 1/4" | 300 | 650 | 1 1/4" x 3/4" | 25 | 54 | 90 | 33 | 17,5 | 14,5 | 82 | 9 | 86 | 104 | 145 | 187 | 21 | 35 | 70 | 140 | 160 | |
| TA-3 – 1 1/2" | 300 | 650 | 1 1/2" x 1" | 25 | 71 | 119 | 33 | 17,5 | 14,5 | 82 | 9 | 86 | 104 | 145 | 187 | 21 | 35 | 70 | 140 | 160 | |
| TA-3 – 1 3/4" | 300 | 650 | 1 3/4" x 31 mm | 29,5 | - | - | 33 | 17,5 | 14,5 | 82 | 9 | 86 | 104 | 145 | 187 | 21 | 35 | 70 | 140 | 160 | |

TA SERIES

- Tensioning head made of low friction coefficient special wearproof plastic (dynamic friction coefficient 0.06 on dry steel)
- High tensile steel ground studs
- Self-lubricating bearings for axial slide

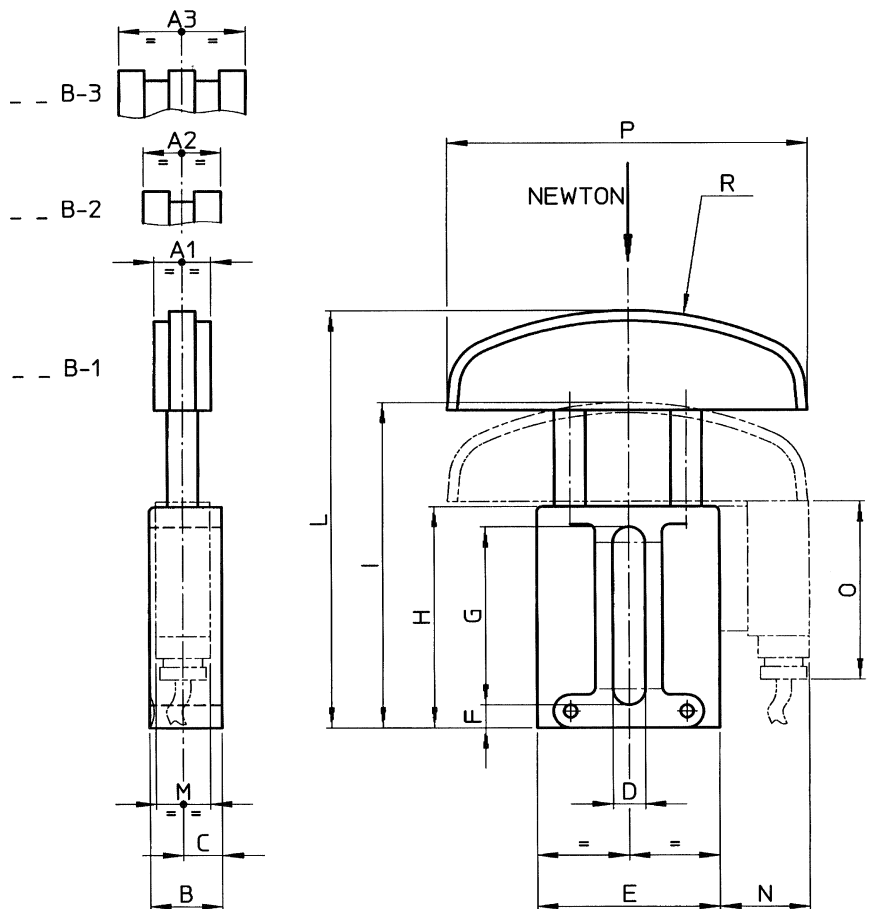
EXAMPLE OF ORDER

Tensioner for 1/2" pitch double chain
TA 1 – 1/2" D

S = single chain **D** = double chain

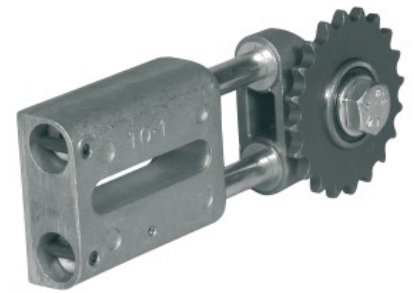
T = triple chain

N.B.: Our tensioners are supplied for chains complying to ISO standards.



Iwis® ETR Series

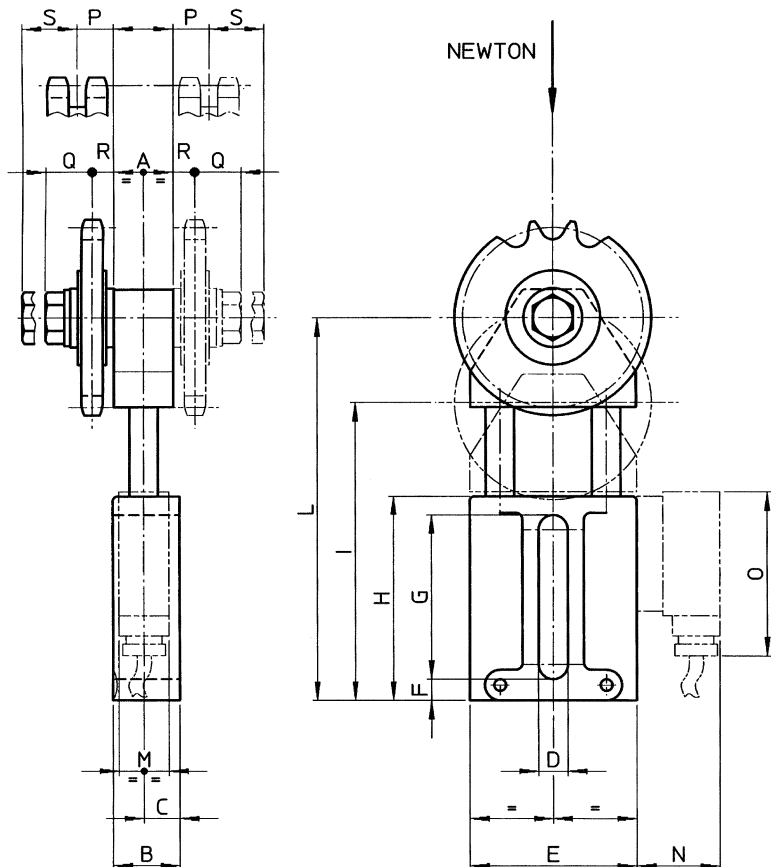
with sprocket and bearing



| Type ETR | Newton | | chain pitch | Z | A | B | C | D | E | F | G | H | I | L | M | N | O | P | Q | R | S |
|---------------|--------|------|---------------|----|----|----|------|------|------|---|----|-----|-----|-----|----|----|----|------|------|------|------|
| | min. | max. | | | | | | | | | | | | | | | | | | | |
| ETR1 – 3/8" | 130 | 250 | 3/8" x 7/32" | 21 | 20 | 23 | 12,5 | 11 | 56,2 | 7 | 58 | 74 | 99 | 127 | - | - | - | 11 | 19,7 | 9,2 | 18 |
| ETR1 – 1/2" | 130 | 250 | 1/2" x 5/16" | 16 | 20 | 23 | 12,5 | 11 | 56,2 | 7 | 58 | 74 | 99 | 127 | - | - | - | 12,5 | 19,7 | 9,2 | 16,5 |
| ETR2 – 5/8" | 180 | 420 | 5/8" x 3/8" | 17 | 25 | 28 | 15 | 12,5 | 70,5 | 9 | 70 | 87 | 127 | 163 | - | - | - | 15,3 | 19,7 | 9,2 | 21,8 |
| ETR2 – 3/4" | 180 | 420 | 3/4" x 7/16" | 15 | 25 | 28 | 15 | 12,5 | 70,5 | 9 | 70 | 87 | 127 | 163 | - | - | - | 17,7 | 19,7 | 9,2 | 19,4 |
| ETR3 – 1" | 300 | 650 | 1" x 17 mm | 12 | 30 | 33 | 17,5 | 14,5 | 82 | 9 | 86 | 104 | 151 | 193 | 21 | 35 | 70 | 26,4 | 19,4 | 8,9 | 26,4 |
| ETR3 – 1 1/4" | 300 | 650 | 1 1/4" x 3/4" | 9 | 30 | 33 | 17,5 | 14,5 | 82 | 9 | 86 | 104 | 151 | 193 | - | - | - | 29,7 | 19,4 | 11,5 | 37,5 |

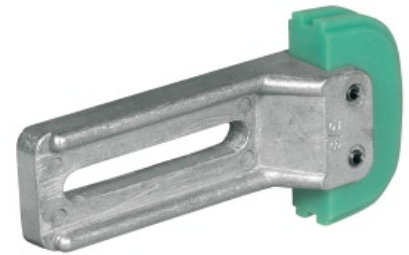
ETR SERIES

- Maintenance free
- Tensioning force changeable (option)
- Resistant against oil and solvents
- Simply mounting and adjustment
- Applies to reverse direction drives



iwis® TF Series

Plastic tightening head



| | chain pitch | A | B | C | D | E | F | G | H | I | L | N | R | A1 | A2 | A3 |
|---------|-------------|-----|----|-----|----|----|------|----|----|----|----|----|-------|----|------|----|
| Type TF | | | | | | | | | | | | | | | | |
| TF 1 | 3/8" | 69 | 35 | 138 | 10 | 73 | 10,5 | 40 | 10 | 15 | 30 | 15 | 15 | 20 | 20 | |
| TF 1 | 1/2" | 69 | 35 | 138 | 10 | 73 | 10,5 | 40 | 10 | 15 | 30 | 15 | 15,25 | 20 | 20,5 | |
| TF 2 | 5/8" | 89 | 45 | 164 | 12 | 85 | 12,5 | 50 | 12 | 18 | 36 | 18 | 19,5 | 22 | 25 | |
| TF 2 | 3/4" | 89 | 45 | 164 | 12 | 85 | 12,5 | 50 | 12 | 18 | 36 | 18 | 21,75 | 22 | 29,5 | |
| TF 3 | 1" | 109 | 55 | 173 | 13 | 82 | 12,5 | 60 | 14 | 20 | 40 | 20 | 30,5 | 25 | 46 | |
| TF 3 | 1 1/4" | 109 | 55 | 173 | 13 | 82 | 12,5 | 60 | 14 | 20 | 40 | 20 | - | 25 | - | |
| TF 3 | 1 1/2" | 109 | 55 | 173 | 13 | 82 | 12,5 | 60 | 14 | 20 | 40 | 20 | - | 25 | - | |

TF TYPE

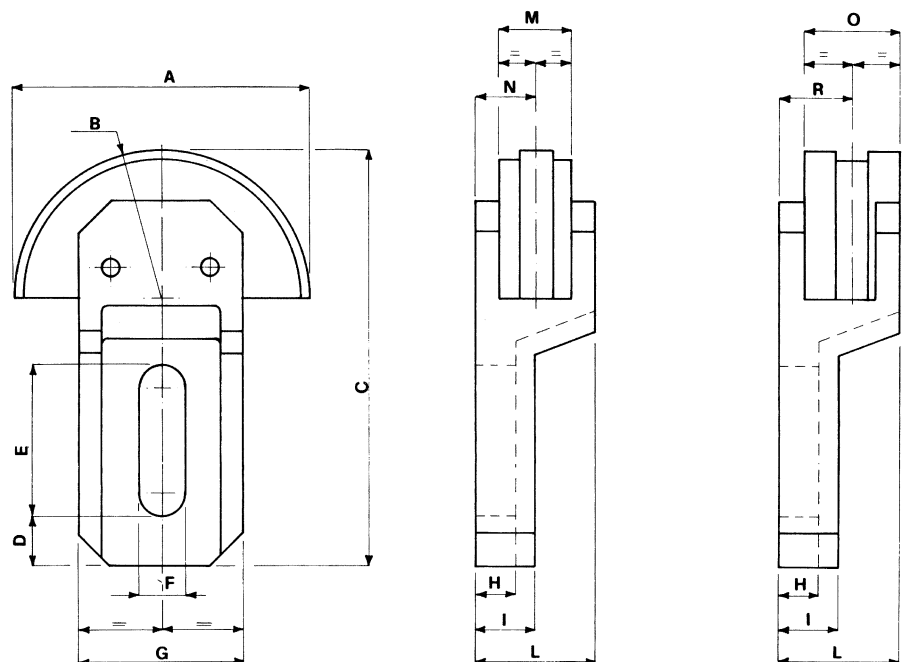
- Wear resistant tensioning head in low friction ($\mu = 0.06$) plastic
- Simple mounting and adjustment
- Operational temperature to 65°C

EXAMPLE OF ORDER

Tensioner for 1/2" pitch double chain
TF 1 – 1/2" D

S = single chain **D** = double chain
T = triple chain

Our tensioners are supplied for chains complying to ISO standards.



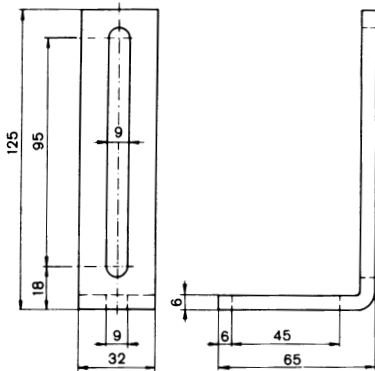
Iwis® Chain Tensioner AMS



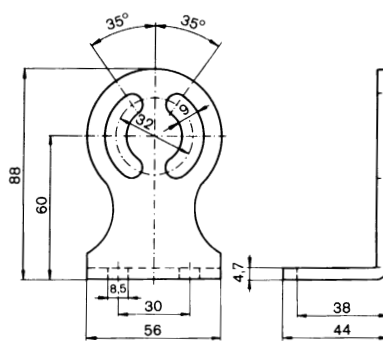
| for Iwis chain | DIN ISO no. | Tensioning Unit No. | No. of teeth z | Tensioning force N | Tensioning path S mm | Adjusting range mm | Dimensions A mm | Dimensions B mm | Basic element No. | Support bracket No. | Tensioner complete with wheel |
|-----------------|-------------|---------------------|----------------|--------------------|----------------------|--------------------|-----------------|-----------------|-------------------|---------------------|-------------------------------|
| Type AMS | | | | | | | | | | | |
| G 67 | 06 B-1 | 10 | 21 | 0-100 | 0-25 | 60 | 47,6 | 39,4 | AMS 11 | 01 | AMS 116 |
| G 67 | 06 B-1 | 10 | 21 | 0-100 | 0-25 | 60 | 47,6 | 39,4 | AMS 12 | 02 | AMS 126 |
| L 85 | 08 B-1 | 10 | 18 | 0-100 | 0-25 | 60 | 47,6 | 39,4 | AMS 11 | 01 | AMS 118 |
| L 85 | 08 B-1 | 10 | 18 | 0-100 | 0-25 | 60 | 47,6 | 39,4 | AMS 12 | 02 | AMS 128 |
| M 106 | 10 B-1 | 10 | 17 | 0-100 | 0-25 | 60 | 47,6 | 39,4 | AMS 11 | 01 | AMS 1110 |
| M 106 | 10 B-1 | 10 | 17 | 0-100 | 0-25 | 60 | 47,6 | 39,4 | AMS 12 | 02 | AMS 1210 |
| M 127 | 12 B-1 | 20 | 15 | 0-300 | 0-45 | 40 | 52,0 | 40,0 | AMS 23 | 03 | AMS 2312 |
| M 1611 | 16 B-1 | 20 | 12 | 0-300 | 0-45 | 40 | 52,65 | 41,3 | AMS 23 | 03 | AMS 2316 |

AMS TYPE

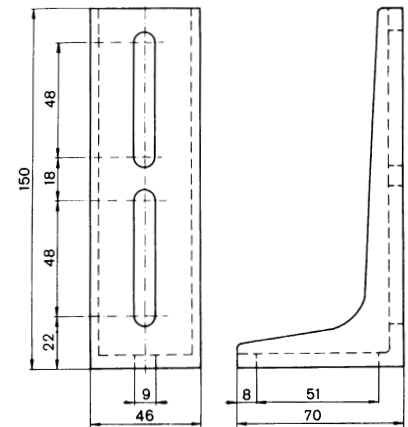
- Automatic retensioning
- Pawl and ratchet rebound safety mechanism
- Constant vibration damping
- Simple adjusting device
- Low in maintenance
- Resistant against oil and solvents



support bracket 01



support bracket 02



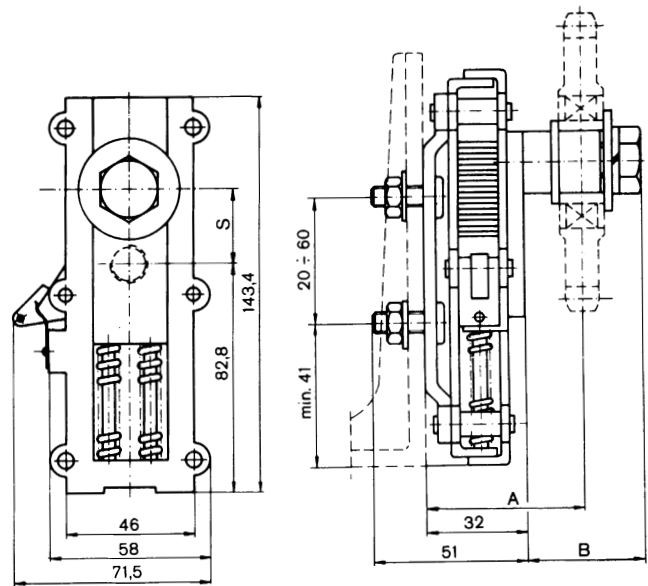
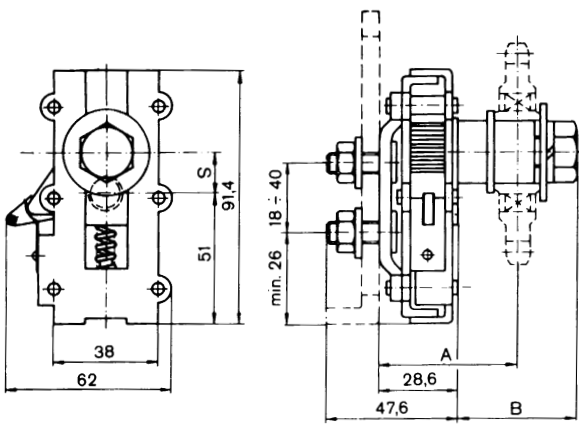
support bracket 03

iwis® Chain Tensioner AMS



AMS 10

AMS 20



Automatic tensioners

iwis® TC Type

Tensioner assembly TC Type



ALTERNATIVE A

ALTERNATIVE B

CORRECT ASSEMBLY

WRONG ASSEMBLY

